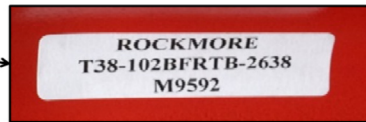


ROCKMORE INTERNATIONAL PRODUCT IDENTIFICATION GUIDE



MARKINGS	
TYPE:	Sticker
LOCATION:	Skirt
CONTENT:	"ROCKMORE" USA part number Work order number



ROCKMORE
T38-102BFRTB-2638 = Part Number
M9592 = Work order number



MARKINGS	
TYPE:	Sticker
LOCATION:	Wear Sleeve
CONTENT:	DTH Hammer size & style
MARKINGS	
TYPE:	Stamp
LOCATION:	Top Sub wrench flat, other side
CONTENT:	"ROCKMORE" SonicFlow patent number Hammer serial number *
MARKINGS	
TYPE:	Stamp
LOCATION:	Top Sub wrench flat, one side
CONTENT:	Top Sub work order number



M8582 = Top Sub work order number

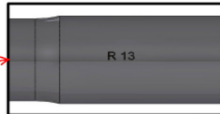
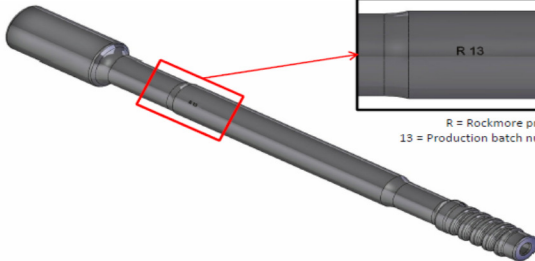


ROCKMORE
PATENT NO
7617889 = Patent number **
M9539-01 = Serial number *

* ROCKMORE Serial numbers contain the work order number plus a suffix with a sequential identifier
** Only one example of the several patents ROCKMORE holds

MARKINGS	
TYPE:	Stamp
LOCATION:	Rod body
CONTENT:	"R" Production batch number

ADDITIONAL MARKINGS	
TYPE:	Sticker on end cap
LOCATION:	Red protective cap on threads
CONTENT:	"Rockmore", "Made in Austria", Diameter, Thread, Length, Austrian part number, Production batch number

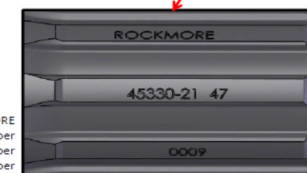


R = Rockmore product
13 = Production batch number

ROCKMORE
MADE IN AUSTRIA
MF-KST.RD60.GT60x4270 = Male/Female
Extension rod, 60mm round steel, GT60
threads, 4270mm length
43609-21 = Austrian part number
#13 = Production batch number



MARKINGS	
TYPE:	Stamp
LOCATION:	Drive splines
CONTENT:	"ROCKMORE" Austrian part number Production batch number Serial number



ROCKMORE
45330-21 = Austrian part number
47 = Production batch number
0009 = Serial number



ROCKMORE INTERNATIONAL
USA: 10065 SW Commerce Circle, Wilsonville, OR 97070
email: info@rockmore-intl.com
Austria: Collini - Strasse 2, Judenburg A-8750
email: austria@rockmore-intl.at
www.rockmore-intl.com

PRODUCT IDENTIFICATION GUIDE

TAPER BITS

BUTTON TYPE



MARKINGS	
TYPE:	Stamp
LOCATION:	Skirt
CONTENT:	"ROCKMORE" USA part number Work order number

ROCKMORE
T22 33B24B
1298 M9686

ROCKMORE
T22-33B24B-1298 = Part number
M9898 = Work order number

CROSS TYPE



MARKINGS	
TYPE:	Stamp
LOCATION:	Skirt
CONTENT:	"ROCKMORE" Bit diameter Head design Angle of taper

ROCKMORE 32S 12

ROCKMORE
32 = 32mm bit diameter
S = Single use, cross bit
12 = 12° taper



ROCKMORE 35M 12

ROCKMORE
35 = 35mm bit diameter
M = Multi use, cross bit
12 = 12° taper



ROCKMORE INTERNATIONAL
USA: 10065 SW Commerce Circle, Wilsonville, OR 97070
email: info@rockmore-intl.com
Austria: Collini - Strasse 2, Judenburg A-8750
email: austria@rockmore-intl.at
www.rockmore-intl.com

PRODUCT IDENTIFICATION GUIDE

THREADED, STANDARD BODY BITS

BUTTON TYPE



MARKINGS	
TYPE:	Stamp
LOCATION:	Skirt
CONTENT:	"ROCKMORE" USA part number Work order number

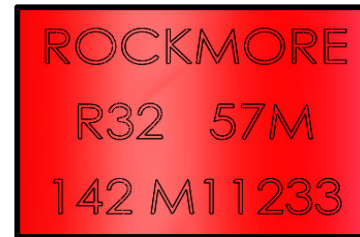


ROCKMORE
T45-76BF-1881 = Part number
W20673 = Work order number

CROSS/X TYPE



MARKINGS	
TYPE:	Stamp
LOCATION:	Skirt
CONTENT:	"ROCKMORE" USA part number Work order number



ROCKMORE
R32-57M-142 = Part number
M11233 = Work order number



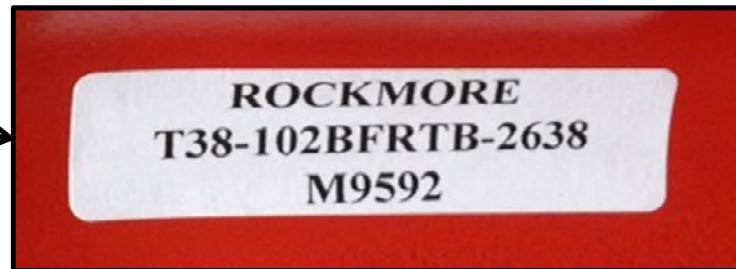
ROCKMORE INTERNATIONAL
 USA: 10065 SW Commerce Circle, Wilsonville, OR 97070
 email: info@rockmore-intl.com
 Austria: Collini - Strasse 2, Judenburg A-8750
 email: austria@rockmore-intl.at
www.rockmore-intl.com

PRODUCT IDENTIFICATION GUIDE

THREADED, RETRAC BITS -- BUTTON TYPE



MARKINGS	
TYPE:	Sticker
LOCATION:	Skirt
CONTENT:	"ROCKMORE" USA part number Work order number



ROCKMORE
T38-102BFRTB-2638 = Part Number
M9592 = Work order number

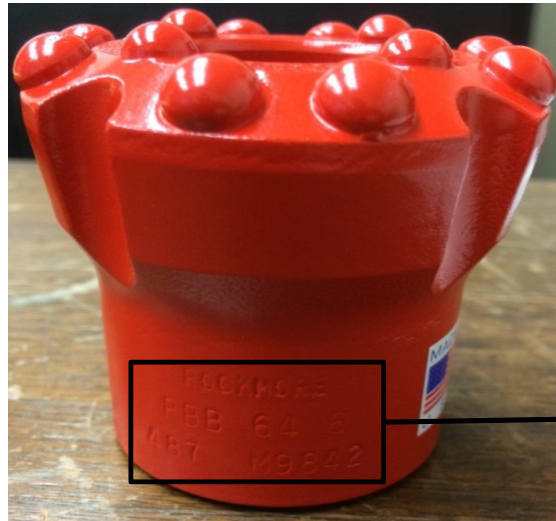


ROCKMORE INTERNATIONAL
USA: 10065 SW Commerce Circle, Wilsonville, OR 97070
email: info@rockmore-intl.com
Austria: Collini - Strasse 2, Judenburg A-8750
email: austria@rockmore-intl.at
www.rockmore-intl.com

PRODUCT IDENTIFICATION GUIDE

REAMING BITS & PILOT ADAPTERS -- BUTTON TYPE

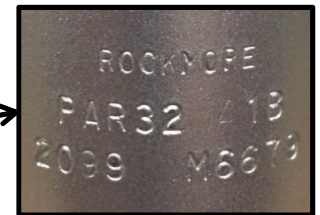
MARKINGS	
TYPE:	Stamp
LOCATION:	Skirt
CONTENT:	"ROCKMORE" USA part number Work order number



ROCKMORE
RBB-64-6-487 = Part Number
M9842 = Work order number



ROCKMORE
PAR32-41B-2099 = Part Number
M6679 = Work order number



ROCKMORE INTERNATIONAL
 USA: 10065 SW Commerce Circle, Wilsonville, OR 97070
 email: info@rockmore-intl.com
 Austria: Collini - Strasse 2, Judenburg A-8750
 email: austria@rockmore-intl.at
www.rockmore-intl.com

PRODUCT IDENTIFICATION GUIDE

THREADED, CONE & HOLE HOPENERS

CONE OPENER TYPE

HOLE OPENER TYPE

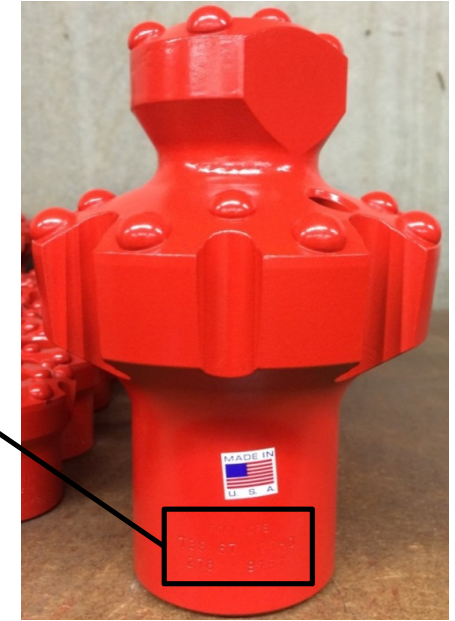
MARKINGS	
TYPE:	Stamp
LOCATION:	Skirt
CONTENT:	"ROCKMORE" USA part number Work order number

MARKINGS	
TYPE:	Stamp
LOCATION:	Skirt
CONTENT:	"ROCKMORE" USA part number Work order number



ROCKMORE
R32 29 76CO
1267 M13577

ROCKMORE
R32-29-76CO-1267 = Part Number
M13577 = Work order number



ROCKMORE
T38 67 127HO
278 M12596

ROCKMORE
T38-67-127HO-278 = Part Number
M12596 = Work order number



ROCKMORE INTERNATIONAL
 USA: 10065 SW Commerce Circle, Wilsonville, OR 97070
 email: info@rockmore-intl.com
 Austria: Collini - Strasse 2, Judenburg A-8750
 email: austria@rockmore-intl.at
www.rockmore-intl.com

PRODUCT IDENTIFICATION GUIDE

DTH BITS -- MANUFACTURED IN ROCKMORE'S WILSONVILLE, OREGON, USA FACILITY

MARKINGS	
TYPE:	Stamp
LOCATION:	Valley of the shank spline
CONTENT:	"ROCKMORE" Serial number *

OR

MARKINGS	
TYPE:	Stamp
LOCATION:	Valley of the shank spline
CONTENT:	USA part number "ROCKMORE" Serial number *

* ROCKMORE Serial numbers contain the work order number plus a suffix with a sequential identifier

ROCKMORE
M9422-20 = Serial number *



OR



USA part number
ROCKMORE



ADDITIONAL MARKINGS	
TYPE:	Tag
LOCATION:	Retaining Ring Bearing Surface
CONTENT:	Part number, size, work order number, inspection date



ROCKMORE INTERNATIONAL

USA: 10065 SW Commerce Circle, Wilsonville, OR 97070

email: info@rockmore-intl.com

Austria: Collini - Strasse 2, Judenburg A-8750

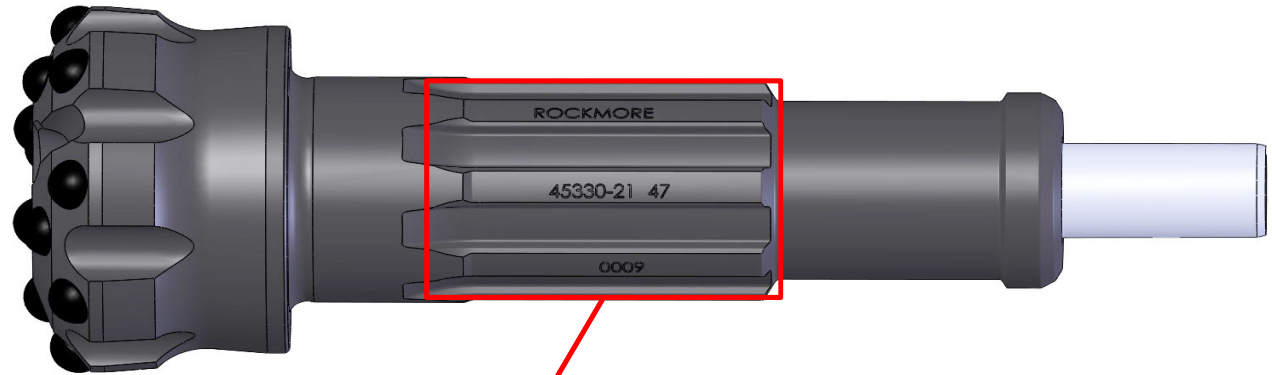
email: austria@rockmore-intl.at

www.rockmore-intl.com

PRODUCT IDENTIFICATION GUIDE

DTH BITS -- MANUFACTURED IN ROCKMORE'S JUDENBURG, AUSTRIA FACILITY

MARKINGS	
TYPE:	Stamp
LOCATION:	Drive splines
CONTENT:	"ROCKMORE" Austrian part number Production batch number Serial number



ROCKMORE
45330-21 = Austrian part number
47 = Production batch number
0009 = Serial number



ROCKMORE INTERNATIONAL
USA: 10065 SW Commerce Circle, Wilsonville, OR 97070
email: info@rockmore-intl.com
Austria: Collini - Strasse 2, Judenburg A-8750
email: austria@rockmore-intl.at
www.rockmore-intl.com

PRODUCT IDENTIFICATION GUIDE

DTH HAMMERS



MARKINGS	
TYPE:	Sticker
LOCATION:	Wear Sleeve
CONTENT:	DTH Hammer size & style
MARKINGS	
TYPE:	Stamp
LOCATION:	Top Sub wrench flat, other side
CONTENT:	"ROCKMORE" SonicFlow patent number Hammer serial number *
MARKINGS	
TYPE:	Stamp
LOCATION:	Top Sub wrench flat, one side
CONTENT:	Top Sub work order number



M8582 = Top Sub work order number



ROCKMORE
PATENT NO
7617889 = Patent number **
M9539-01 = Serial number *

* ROCKMORE Serial numbers contain the work order number plus a suffix with a sequential identifier

** Only one example of the several patents ROCKMORE holds



ROCKMORE INTERNATIONAL

USA: 10065 SW Commerce Circle, Wilsonville, OR 97070

email: info@rockmore-intl.com

Austria: Collini - Strasse 2, Judenburg A-8750

email: austria@rockmore-intl.at

www.rockmore-intl.com

PRODUCT IDENTIFICATION GUIDE

DTH HAMMER SPARE PARTS -- AIR GUIDE



MARKINGS	
TYPE:	Stamp
LOCATION:	Shaft
CONTENT:	Serial number



M12845 = Work order number



ROCKMORE INTERNATIONAL
USA: 10065 SW Commerce Circle, Wilsonville, OR 97070
email: info@rockmore-intl.com
Austria: Collini - Strasse 2, Judenburg A-8750
email: austria@rockmore-intl.at
www.rockmore-intl.com

PRODUCT IDENTIFICATION GUIDE

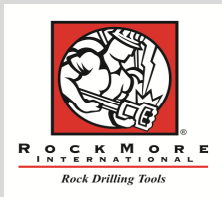
DTH HAMMER SPARE PARTS -- DRIVER SUB



MARKINGS	
TYPE:	Stamp
LOCATION:	Thread relief
CONTENT:	"R"



R = Rockmore product



ROCKMORE INTERNATIONAL

USA: 10065 SW Commerce Circle, Wilsonville, OR 97070

email: info@rockmore-intl.com

Austria: Collini - Strasse 2, Judenburg A-8750

email: austria@rockmore-intl.at

www.rockmore-intl.com

PRODUCT IDENTIFICATION GUIDE

DTH HAMMER SPARE PARTS -- PISTON



MARKINGS	
TYPE:	Stamp
LOCATION:	Piston flat
CONTENT:	"ROCKMORE" Serial number USA part number Heat treatment code



ROCKMORE
M13044-07 = Serial number
PT-004 = USA part number
N-1 = Heat treatment code



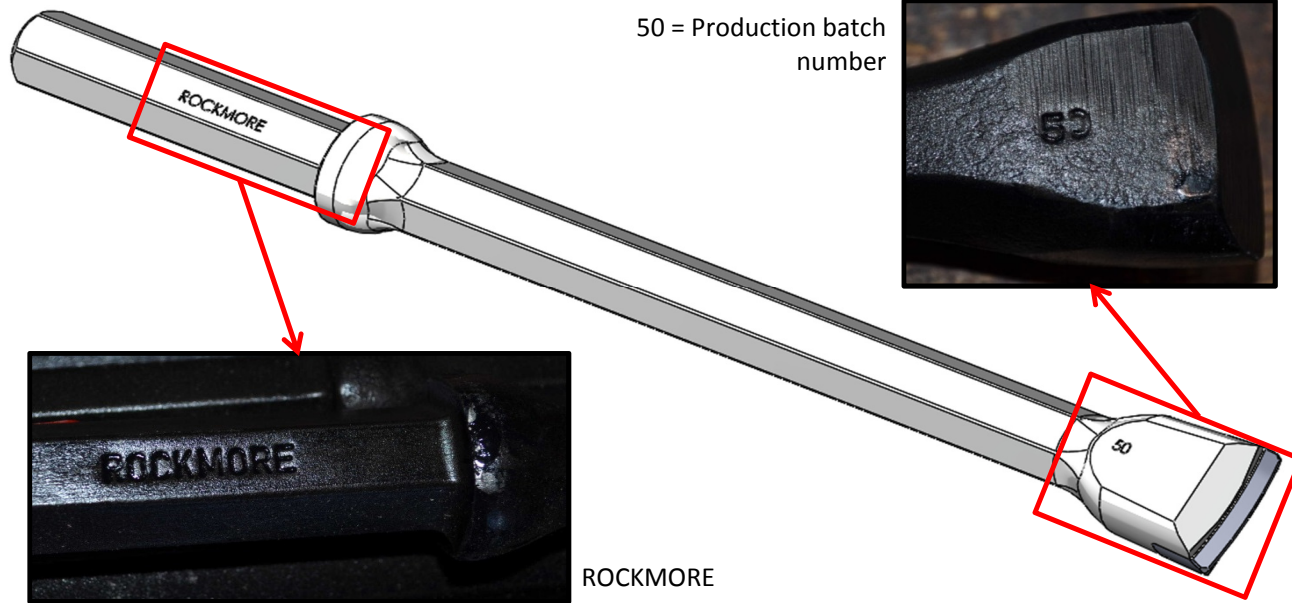
ROCKMORE INTERNATIONAL
USA: 10065 SW Commerce Circle, Wilsonville, OR 97070
email: info@rockmore-intl.com
Austria: Collini - Strasse 2, Judenburg A-8750
email: austria@rockmore-intl.at
www.rockmore-intl.com

PRODUCT IDENTIFICATION GUIDE

INTEGRAL RODS

MARKINGS			
TYPE:	Stamp	TYPE:	Stamp
LOCATION:	Shank	LOCATION:	Flat side of bit head
CONTENT:	"ROCKMORE"	CONTENT:	Production batch number

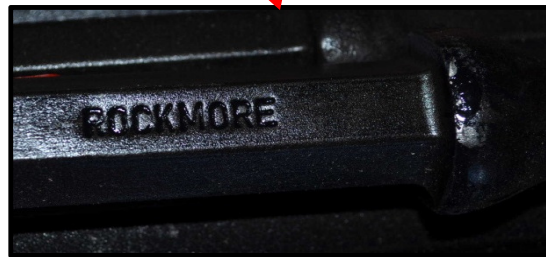
ADDITIONAL MARKINGS			
TYPE:	End cap	TYPE:	Sticker
LOCATION:	Red protective cap on bit end	LOCATION:	Red protective cap on shank end
CONTENT:	N/A	CONTENT:	"ROCKMORE", "MADE IN AUSTRIA", USA part number, Austrian part number, Production batch number



50 = Production batch number



Protective end cap on bit end



ROCKMORE

ROCKMORE
MADE IN AUSTRIA
714-0434 = USA p/n
49133-22 = Austrian p/n
#50 = Production batch number



ROCKMORE INTERNATIONAL

USA: 10065 SW Commerce Circle, Wilsonville, OR 97070

email: info@rockmore-intl.com

Austria: Collini - Strasse 2, Judenburg A-8750

email: austria@rockmore-intl.at

www.rockmore-intl.com

PRODUCT IDENTIFICATION GUIDE

TAPER RODS

MARKINGS			
TYPE:	Stamp	TYPE:	Stamp
LOCATION:	Shank	LOCATION:	Rod body
CONTENT:	"ROCKMORE"	CONTENT:	"R" Production batch number

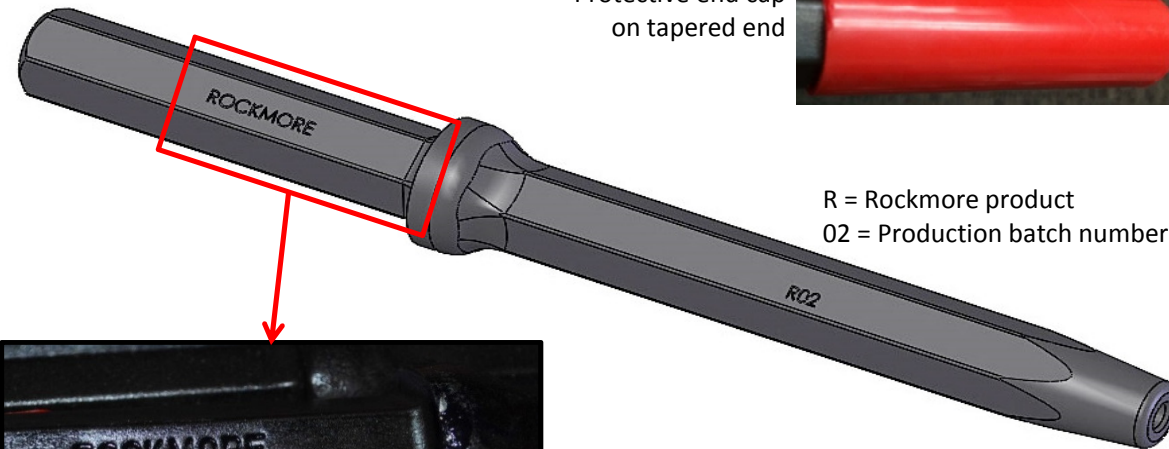
ADDITIONAL MARKINGS			
TYPE:	End cap	TYPE:	Sticker
LOCATION:	Red protective cap on tapered end	LOCATION:	Red protective cap on shank end
CONTENT:	N/A	CONTENT:	"ROCKMORE", "MADE IN AUSTRIA", Product specifications, Austrian part number, Production batch number

ROCKMORE
MADE IN AUSTRIA
KOST H22 = Taper Rod, 22mm steel
714-03K12 = 7/8" x 4-1/4" shank,
300mm length, 12 degree taper
43347-22 = Austrian part number
#02 = Production batch number

Protective end cap
on tapered end



R = Rockmore product
02 = Production batch number



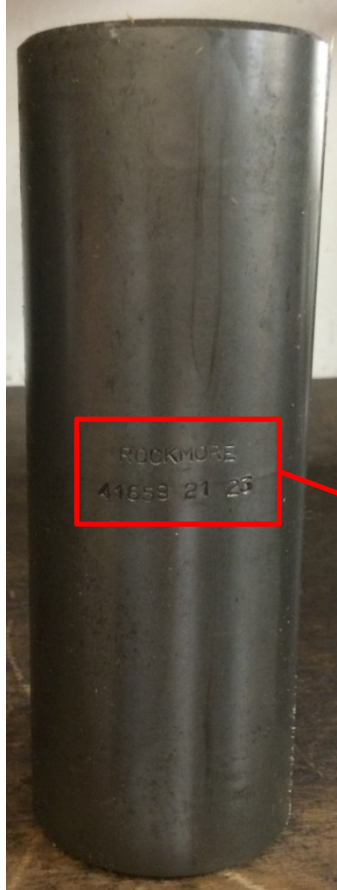
ROCKMORE



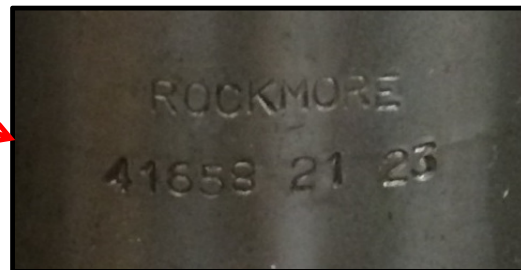
ROCKMORE INTERNATIONAL
USA: 10065 SW Commerce Circle, Wilsonville, OR 97070
email: info@rockmore-intl.com
Austria: Collini - Strasse 2, Judenburg A-8750
email: austria@rockmore-intl.at
www.rockmore-intl.com

PRODUCT IDENTIFICATION GUIDE

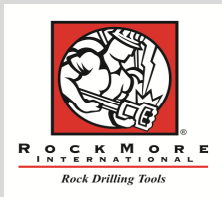
COUPLINGS & COUPLING ADAPTERS



MARKINGS	
TYPE:	Stamp
LOCATION:	Outside diameter
CONTENT:	"ROCKMORE" Austrian part number Production batch number



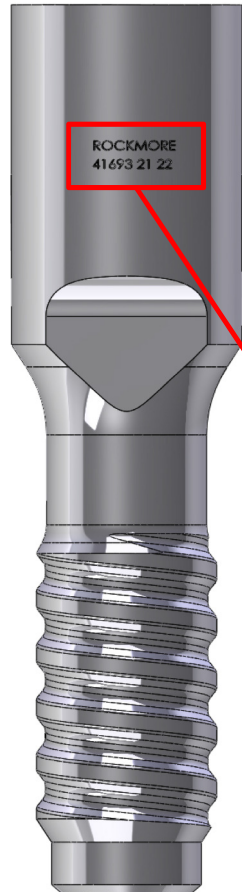
ROCKMORE
41658-21 = Austrian part number
23 = Production batch number



ROCKMORE INTERNATIONAL
USA: 10065 SW Commerce Circle, Wilsonville, OR 97070
email: info@rockmore-intl.com
Austria: Collini - Strasse 2, Judenburg A-8750
email: austria@rockmore-intl.at
www.rockmore-intl.com

PRODUCT IDENTIFICATION GUIDE

BIT ADAPTERS



MARKINGS	
TYPE:	Stamp
LOCATION:	Female outside diameter
CONTENT:	"ROCKMORE" Austrian part number Production batch number



ROCKMORE
41693-21 = Austrian part number
22 = Production batch number

ADDITIONAL MARKINGS	
TYPE:	Sticker
LOCATION:	Red protective cap on threads
CONTENT:	"ROCKMORE", "MADE IN AUSTRIA", Product specifications (threads, diameter, length), Austrian part number, Production batch number



ROCKMORE
MADE IN AUSTRIA
UEST = Bit adapter
T45F = T45 female thread
T51M = T51 male thread
RD63 = 63mm diameter
285 = 285mm length
41693-21 = Austrian part number
#22 = Production batch number



ROCKMORE INTERNATIONAL

USA: 10065 SW Commerce Circle, Wilsonville, OR 97070

email: info@rockmore-intl.com

Austria: Collini - Strasse 2, Judenburg A-8750

email: austria@rockmore-intl.at

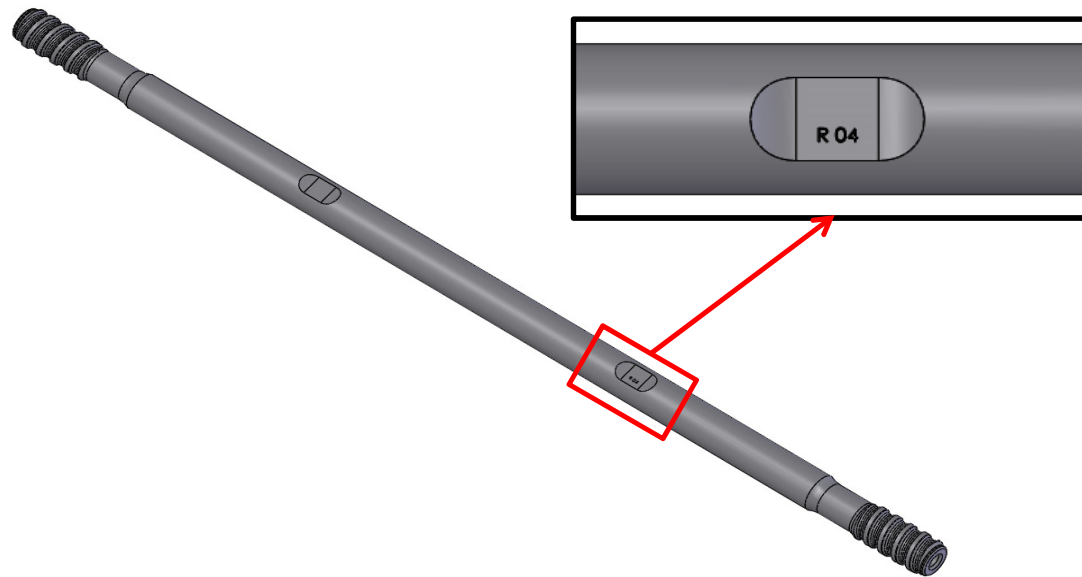
www.rockmore-intl.com

PRODUCT IDENTIFICATION GUIDE

**MALE/MALE RODS, ROUND -- MANUFACTURED IN ROCKMORE'S WILSONVILLE, OREGON, USA FACILITY
P/N T38R-3050 (11128-12)**

MARKINGS	
TYPE:	Stamp
LOCATION:	Rod body
CONTENT:	"R" Production batch number

ADDITIONAL MARKINGS	
TYPE:	End cap
LOCATION:	Red protective caps on threads
CONTENT:	N/A



R = Rockmore product
04 = Production batch number

Protective end
caps on threads



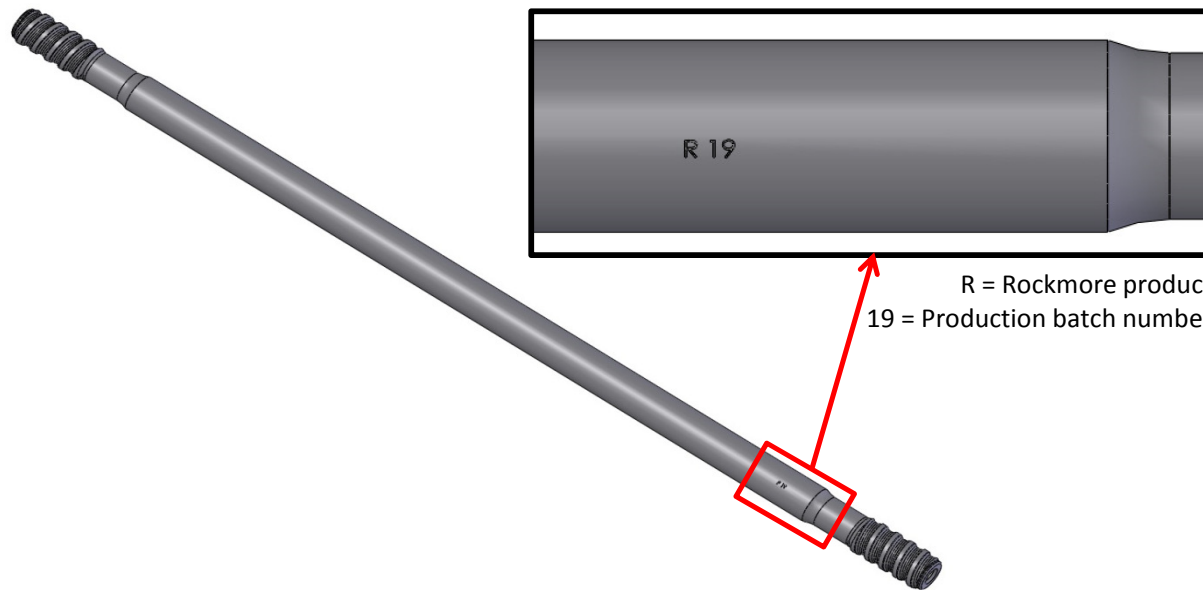
ROCKMORE INTERNATIONAL
USA: 10065 SW Commerce Circle, Wilsonville, OR 97070
email: info@rockmore-intl.com
Austria: Collini - Strasse 2, Judenburg A-8750
email: austria@rockmore-intl.at
www.rockmore-intl.com

PRODUCT IDENTIFICATION GUIDE

MALE/MALE RODS, ROUND -- MANUFACTURED IN ROCKMORE'S JUDENBURG, AUSTRIA FACILITY

MARKINGS	
TYPE:	Stamp
LOCATION:	Rod body
CONTENT:	"R" Production batch number

ADDITIONAL MARKINGS	
TYPE:	Sticker on end cap
LOCATION:	Red protective cap on threads
CONTENT:	"Rockmore", "Made in Austria", Diameter, Thread, Length, Austrian part number, Production batch number



R = Rockmore product
19 = Production batch number

ROCKMORE
MADE IN AUSTRIA
KST.RD46.T45x3050 = Extension rod,
46mm round steel, T45 threads, 3050mm
length
47051-21 = Austrian part number
#19 = Production batch number



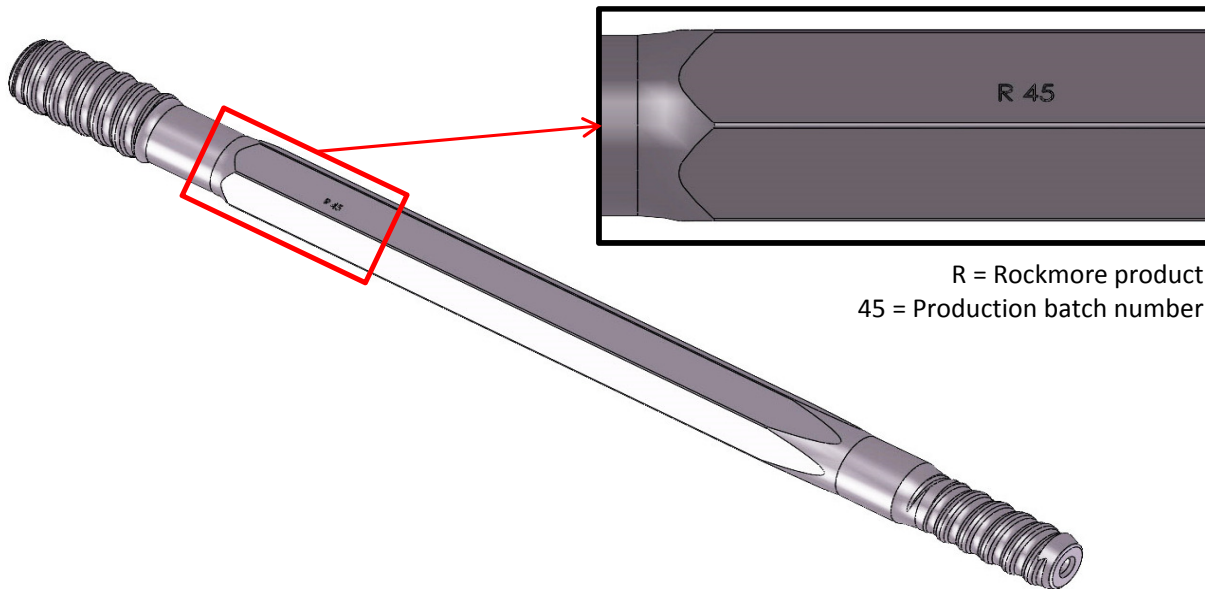
ROCKMORE INTERNATIONAL
 USA: 10065 SW Commerce Circle, Wilsonville, OR 97070
 email: info@rockmore-intl.com
 Austria: Collini - Strasse 2, Judenburg A-8750
 email: austria@rockmore-intl.at
www.rockmore-intl.com

PRODUCT IDENTIFICATION GUIDE

MALE/MALE RODS, HEX

MARKINGS	
TYPE:	Stamp
LOCATION:	Rod body
CONTENT:	"R" Production batch number

ADDITIONAL MARKINGS	
TYPE:	Sticker on end cap
LOCATION:	Red protective cap on threads
CONTENT:	"Rockmore", "Made in Austria", Diameter, Thread, Length, Austrian part number, Production batch number



R = Rockmore product
45 = Production batch number

ROCKMORE
MADE IN AUSTRIA
KST-H22.R25 X 1220 = Extension rod,
22mm hex steel, R25 threads, 1220mm
length
14890-21 = Austrian part number
#45 = Production batch number



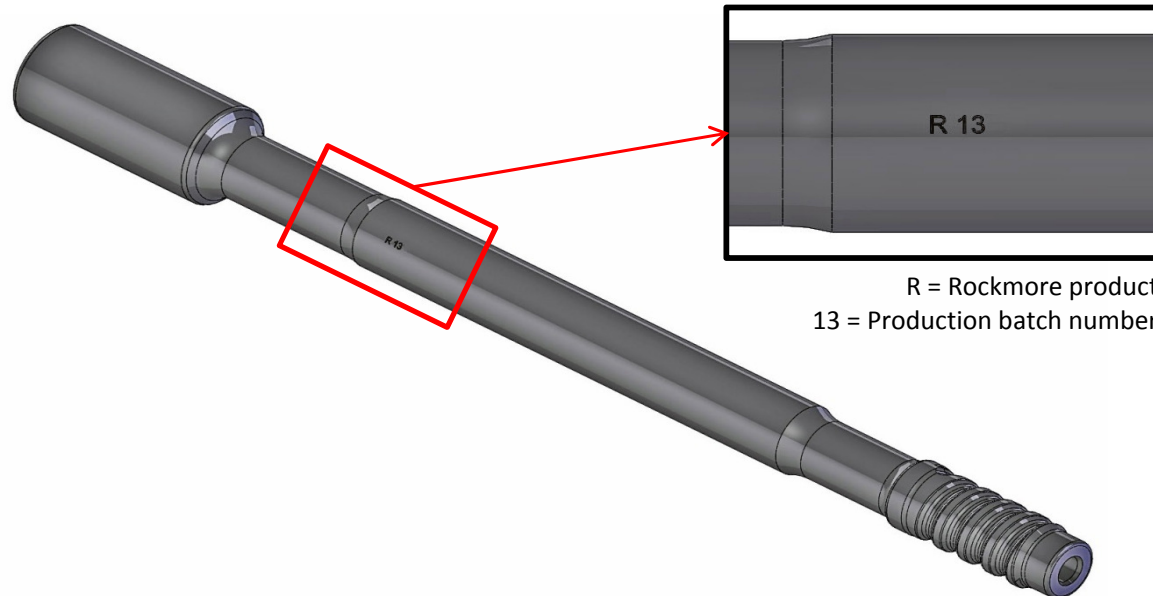
ROCKMORE INTERNATIONAL
 USA: 10065 SW Commerce Circle, Wilsonville, OR 97070
 email: info@rockmore-intl.com
 Austria: Collini - Strasse 2, Judenburg A-8750
 email: austria@rockmore-intl.at
www.rockmore-intl.com

PRODUCT IDENTIFICATION GUIDE

MALE/FEMALE (MF) RODS, ROUND

MARKINGS	
TYPE:	Stamp
LOCATION:	Rod body
CONTENT:	"R" Production batch number

ADDITIONAL MARKINGS	
TYPE:	Sticker on end cap
LOCATION:	Red protective cap on threads
CONTENT:	"Rockmore", "Made in Austria", Diameter, Thread, Length, Austrian part number, Production batch number



R = Rockmore product
13 = Production batch number

ROCKMORE
MADE IN AUSTRIA
MF-KST.RD60.GT60x4270 = Male/Female
Extension rod, 60mm round steel, GT60
threads, 4270mm length
43609-21 = Austrian part number
#13 = Production batch number



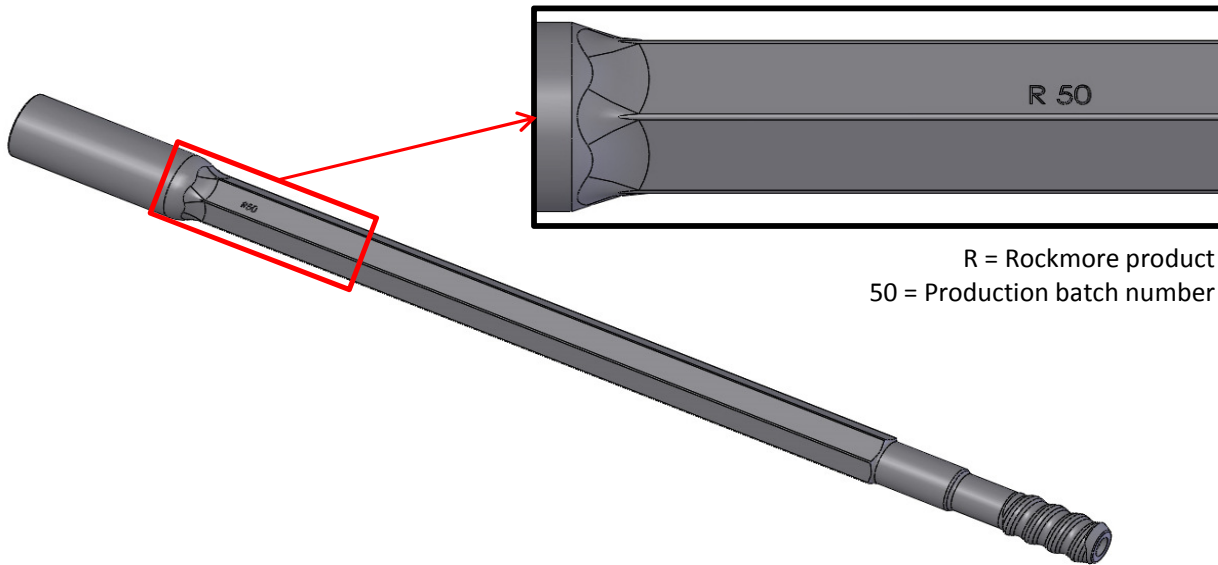
ROCKMORE INTERNATIONAL
 USA: 10065 SW Commerce Circle, Wilsonville, OR 97070
 email: info@rockmore-intl.com
 Austria: Collini - Strasse 2, Judenburg A-8750
 email: austria@rockmore-intl.at
www.rockmore-intl.com

PRODUCT IDENTIFICATION GUIDE

MALE/FEMALE (MF) RODS, HEX

MARKINGS	
TYPE:	Stamp
LOCATION:	Rod body
CONTENT:	"R" Production batch number

ADDITIONAL MARKINGS	
TYPE:	Sticker on end cap
LOCATION:	Red protective cap on threads
CONTENT:	"Rockmore", "Made in Austria", Diameter, Thread, Length, Austrian part number, Production batch number



R = Rockmore product
50 = Production batch number

ROCKMORE
MADE IN AUSTRIA
MF-KST-H25.R25x1830 = Male/Female
Extension rod, 25mm hex steel, R25
threads, 1830mm length
43790-21 = Austrian part number
#50 = Production batch number



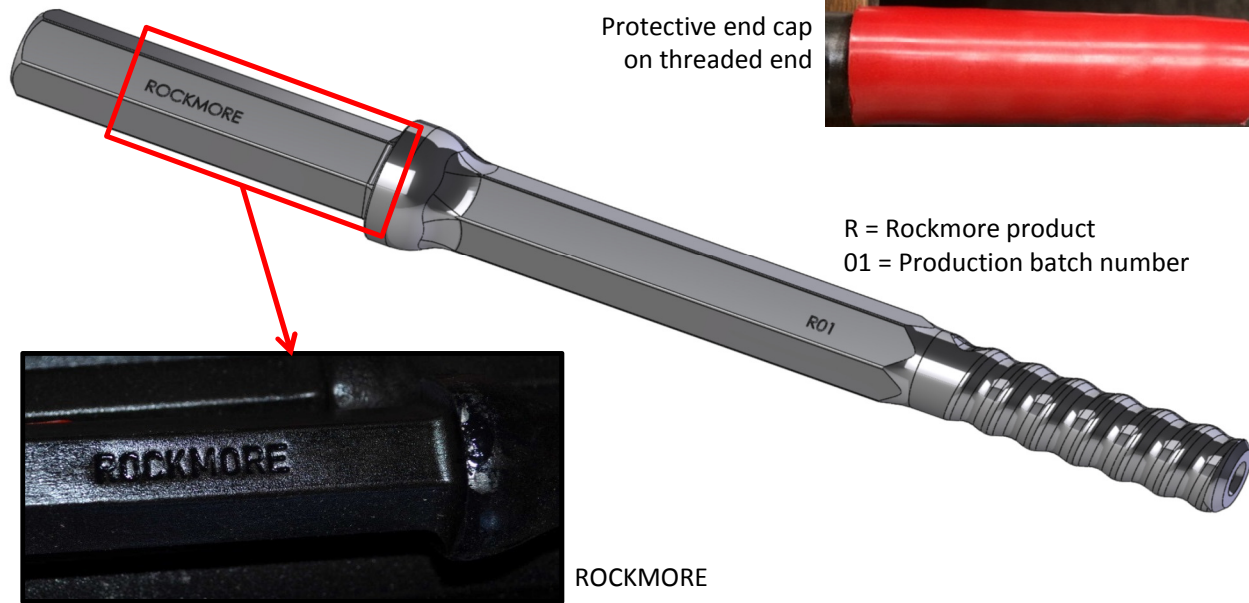
ROCKMORE INTERNATIONAL
 USA: 10065 SW Commerce Circle, Wilsonville, OR 97070
 email: info@rockmore-intl.com
 Austria: Collini - Strasse 2, Judenburg A-8750
 email: austria@rockmore-intl.at
www.rockmore-intl.com

PRODUCT IDENTIFICATION GUIDE

SHANK RODS

MARKINGS			
TYPE:	Stamp	TYPE:	Stamp
LOCATION:	Shank	LOCATION:	Rod body
CONTENT:	"ROCKMORE"	CONTENT:	"R" Production batch number

ADDITIONAL MARKINGS			
TYPE:	End cap	TYPE:	Sticker
LOCATION:	Red protective cap on threads	LOCATION:	Red protective cap on shank end
CONTENT:	N/A	CONTENT:	"ROCKMORE", "MADE IN AUSTRIA", Product specifications, Austrian part number, Production batch number



ROCKMORE
MADE IN AUSTRIA
H25 = 25mm steel
734-R25x0305 = 1" x 4-1/4" shank,
R25 thread, 305mm length
43879-21 = Austrian part number
01 = Production batch number



ROCKMORE INTERNATIONAL
 USA: 10065 SW Commerce Circle, Wilsonville, OR 97070
 email: info@rockmore-intl.com
 Austria: Collini - Strasse 2, Judenburg A-8750
 email: austria@rockmore-intl.at
www.rockmore-intl.com

PRODUCT IDENTIFICATION GUIDE

SHANK ADAPTERS -- SHIPPED FROM ROCKMORE'S WILSONVILLE, OREGON, USA FACILITY

MARKINGS	
TYPE:	Stamp
LOCATION:	Drive splines
CONTENT:	Austrian part number Production batch number "ROCKMORE"

ADDITIONAL MARKINGS			
TYPE:	Stickers on end cap		
LOCATION:	Red protective cap on threads		
CONTENT:	"Rockmore", "Made in Austria", Drifter name, Diameter, Thread, Length, Austrian part number, Production batch number	CONTENT:	"Rockmore International", USA & Austrian part numbers, Drifter name(s), Thread, Length, Diameter, Heat treatment type



Rockmore
Made in Austria
EE = Shank Adapter
TAM.HL700/HL800T = Drifter names
SSP52 = side flushing, 52 mm diameter
T51x600 = T51 thread, 600 mm length
48900-21 = Austrian part number
#35 = Production batch number



Rockmore International
T5158SF-002 = USA part number
48900-21 = Austrian part number
Shank = Shank adapter
HL 650-52/700-52/710-52/800 T-52 =
Drifter names
T51M, 600MM, 52MM = T51 male
thread, 600mm length, 52mm diameter
CARB = Carburized heat treatment

48900-21 = Austrian part number
35 = Production batch number
ROCKMORE



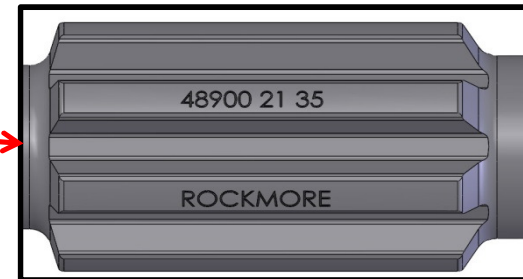
ROCKMORE INTERNATIONAL
USA: 10065 SW Commerce Circle, Wilsonville, OR 97070
email: info@rockmore-intl.com
Austria: Collini - Strasse 2, Judenburg A-8750
email: austria@rockmore-intl.at
www.rockmore-intl.com

PRODUCT IDENTIFICATION GUIDE

SHANK ADAPTERS -- SHIPPED FROM ROCKMORE'S JUDENBURG, AUSTRIA FACILITY

MARKINGS	
TYPE:	Stamp
LOCATION:	Drive splines
CONTENT:	Austrian part number Production batch number "ROCKMORE"

48900 21 = Austrian part number
35 = Production batch number
ROCKMORE



Rockmore
Made in Austria
EE = Shank Adapter
TAM.HL700/HL800T = Drifter names
SSP52 = side flushing, 52 mm diameter
T51x600 = T51 thread, 600 mm length
48900-21 = Austrian part number
#35 = Production batch number

ADDITIONAL MARKINGS	
TYPE:	Sticker on end cap
LOCATION:	Red protective cap on threads
CONTENT:	"Rockmore", "Made in Austria", Drifter name(s), Diameter, Thread, Length, Austrian part number, Production batch number



ROCKMORE INTERNATIONAL
 USA: 10065 SW Commerce Circle, Wilsonville, OR 97070
 email: info@rockmore-intl.com
 Austria: Collini - Strasse 2, Judenburg A-8750
 email: austria@rockmore-intl.at
www.rockmore-intl.com